

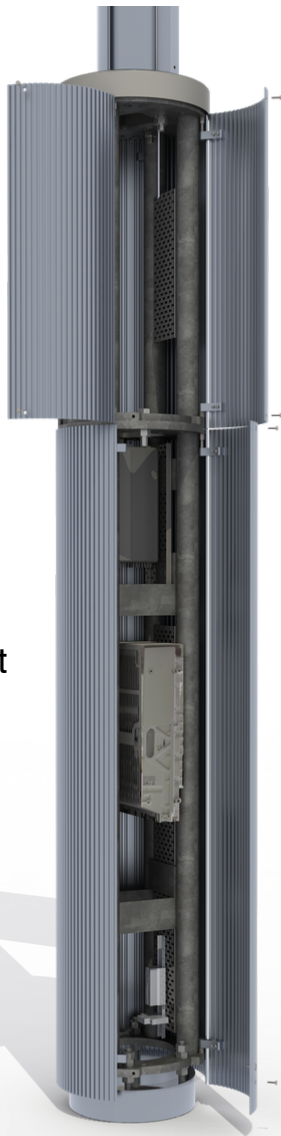
# Multipole™

Smart City Solutions

## Multi-Tech

Add-on  
module

Full height  
module



For further details please contact us on  
02 9997 1211 or visit  
[multipole.com.au](http://multipole.com.au)

Part of the Goldspar Group

**Multipole™**  
Smart City Solutions

# Multipole™

Smart City Solutions

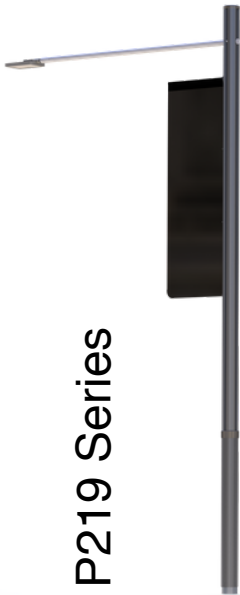
## Multi-Tech

Part of a Suite of Future-proof  
Solutions from Multipole

Estate Series



P219 Series



P273 Series



Multi-Tech



For further details please contact us on  
02 9997 1211 or visit  
[multipole.com.au](http://multipole.com.au)

Part of the Goldspar Group

**Multipole™**  
Smart City Solutions